



VISIBLE LED

1.ELEMENT APPEARANCE

PAGE : 1 / 3

Model No.	Material	Lighting Color	Resin Color
RT-P2504RWT-6	AlGaAs/AlGaAs	Red	Water Clear

2.ABSOLUTE MAXIMUM RATINGS AT Ta=25

Characteristic	Symbol	Rating	Unit
Forward direct current	IFM	120	mA
Reverse voltage	VRM	5	V
Operating temperature	Topr	-40 to +85	
Storage temperature	Tstg	-40 to +100	
Power dissipation	Pd	288	mW

3.ELECTRO-OPTICAL CHARACTERISTICS AT Ta=25

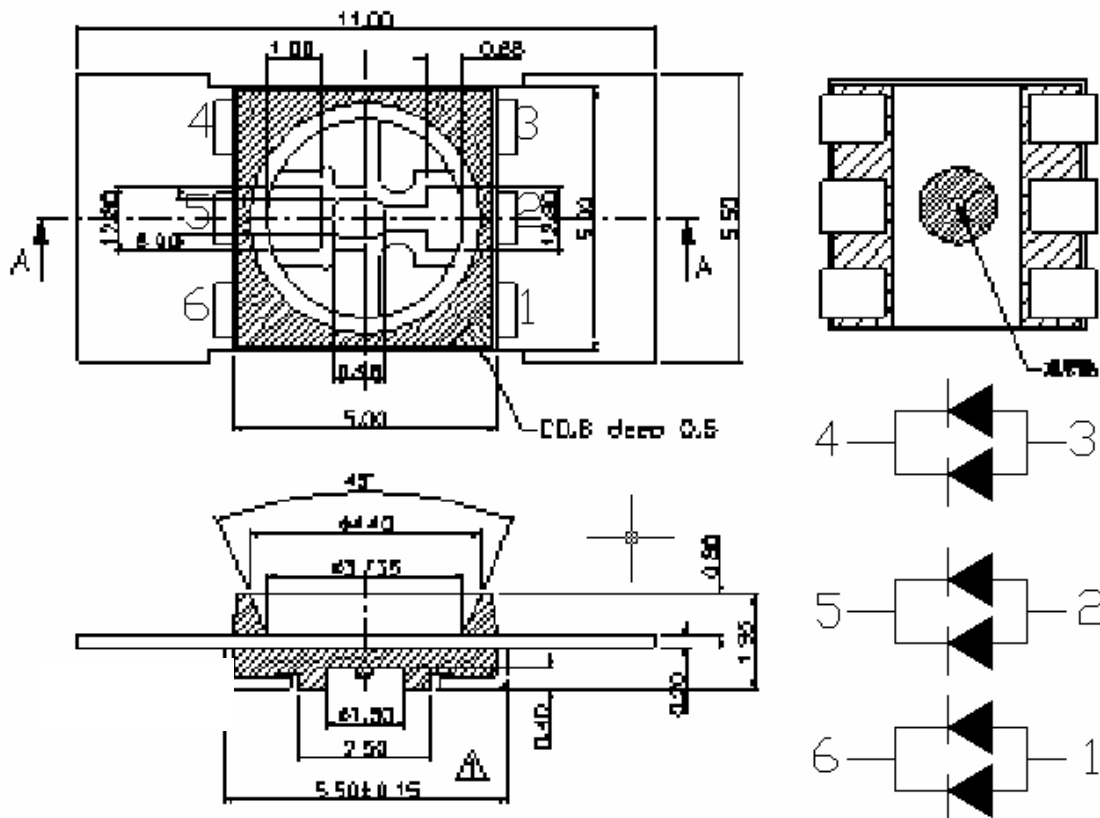
Characteristic	Symbol	Condition	Min.	Typ.	Max.	Unit
Luminous intensity	Iv	IF=120 mA	290	490		mcd
Forward voltage	VF	IF=120 mA		2.2	2.6	V
Reverse current	IR	VR=4V			10	μA
Dominant wavelength	d	IF=120 mA		660		nm
Spectral line half width		IF=120 mA		25		nm
Viewing angle	2 1/2	IF=120 mA		120		deg.

* Luminous Intensity Measurement allowance is $\pm 15\%$

* Forward voltage Measurement allowance is $\pm 0.1V$

* Emission wavelength Measurement allowance is $\pm 1nm$

4.DIMENSIONS UNIT : m/m TOLERANCE : ± 0.25



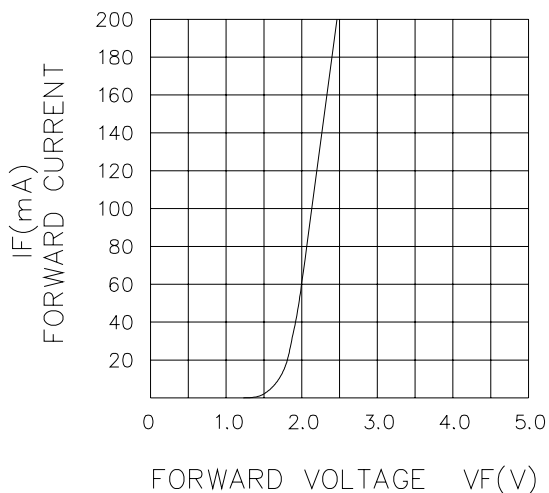


RODAN(TAIWAN)LTD.

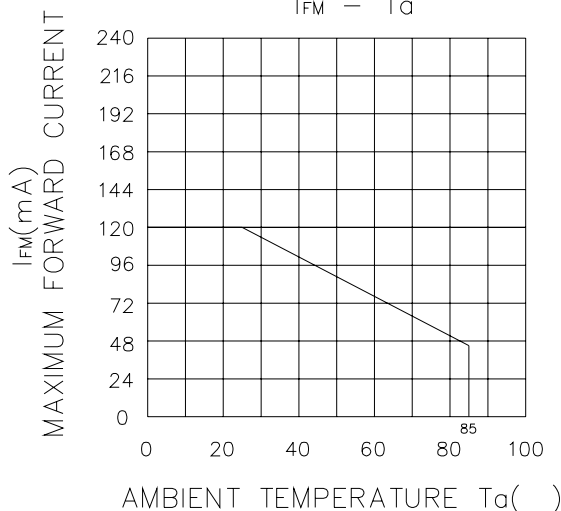
Model : RT-P2504RWT-6

PAGE : 2 / 3

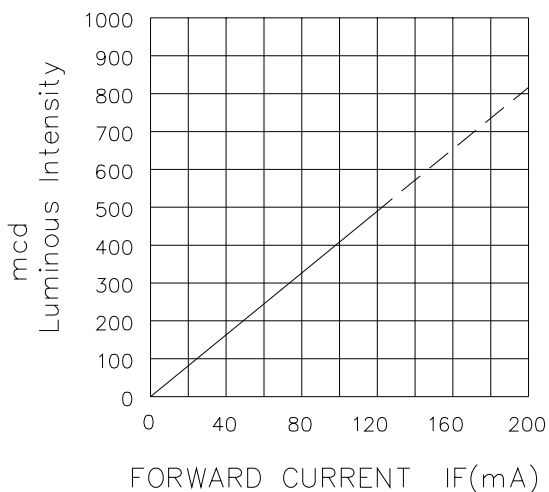
$I_F - V_F$ ($T_a=25^\circ$)



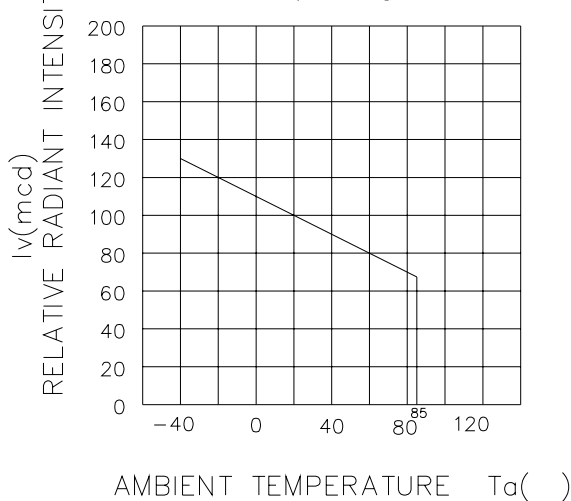
$I_{FM} - T_a$



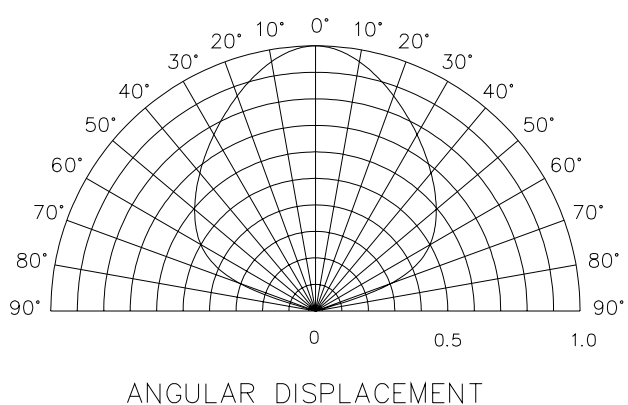
$I_v - I_F$ ($T_a=25^\circ$)



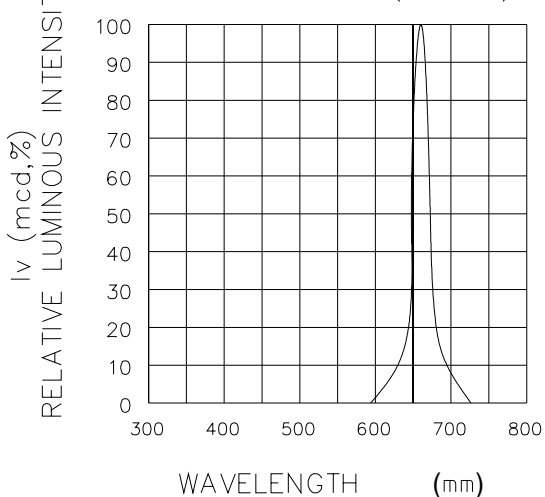
$I_v - T_a$



($T_a=25^\circ$)



$I_v -$ ($T_a=25^\circ$)





Surface Mounting Condition

In the automatic mounting of SMD LED to the PCB, any bending, expanding, and pulling forces against the SMD LED should be minimized to prevent the electrical failures or mechanical damaged.

Reflow Soldering and Temperature Profile

The SMD LED is designed for the reflow soldering process. Too high temperature or too large temperature gradient may cause the electrical and optical failures.

